

Welcome to Control Play!

Enjoy your **new music** console and the **many benefits** it brings to your business.



- Pre-loaded Control Play software
- Remote assistance software
- Automatic content updates
- Pre-configured, plug and play
- Optional monitor display
- Optional Keyboard + mouse
- Unlimited tech support access

Control Play's team has done a system audit with you to ensure compatibility before this console was delivered. **All necessary adapters/cables are included in this box.**

Our Support Team is here to assist with each stage of setup and installation. If you need any assistance, please call us at: **1-866-896-3470 ext.1**
or Chat: **controlplay.com/contact**

Technical Requirements:

AUDIO

The console comes with a regular stereo, line-level audio output: 1/8" (3.5mm). This output connects directly to your mixer, amplifier, or amplified speakers.

INTERNET

A direct, hard-wired connection from your router or modem is recommended for the most reliable performance. The internet connection download speed should be a minimum of 3 Mbps for optimal results.

ELECTRICAL

To maintain warranty coverage for electronic components, ensure the console is plugged into a surge protection device. For maximum protection and reliability, an Uninterruptible Power Supply (UPS) is recommended—this can be purchased at any electronics or computer store.

Setup and Installation

1. Unpack the Music Console and cables



*Monitor, Keyboard & Mouse
are optional*



Console

AUDIO PORT

NOTES:

- If it's being placed in an A/V Rack Shelf, we recommend 1U or more

Back Console



Ethernet Port

USB
USB Ports

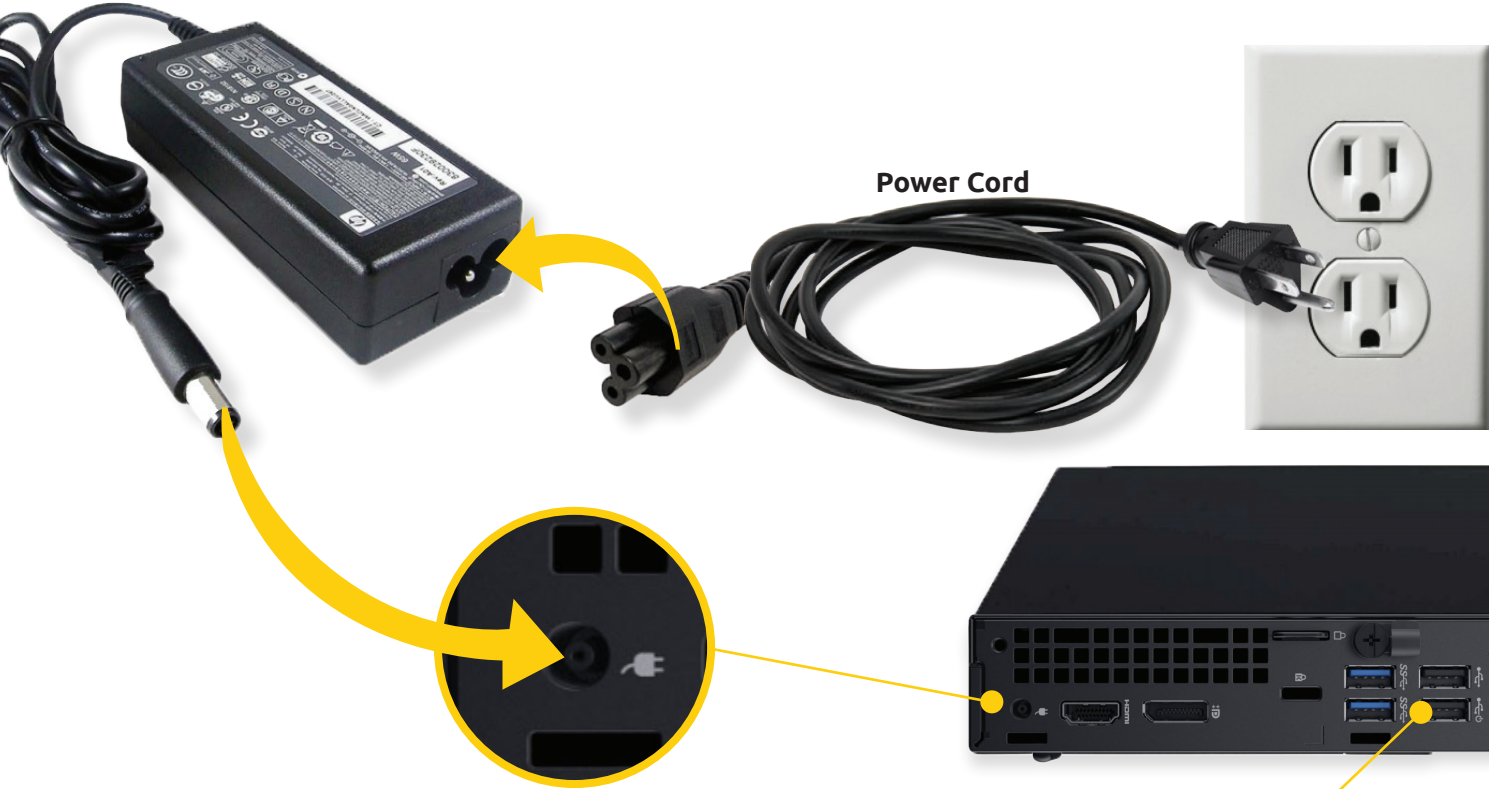
Console Dimensions:

Width: 7"

Height: 1.5"

Depth: 7.5" (allow 9.5" for cable connectors)

2. Connect power



3. Connect keyboard and mouse (OPTIONAL)



4. Connect to your sound system

Audio

Audio is sent from the 1/8" (3.5mm) headphone jack on the front, to a line input on your sound system.



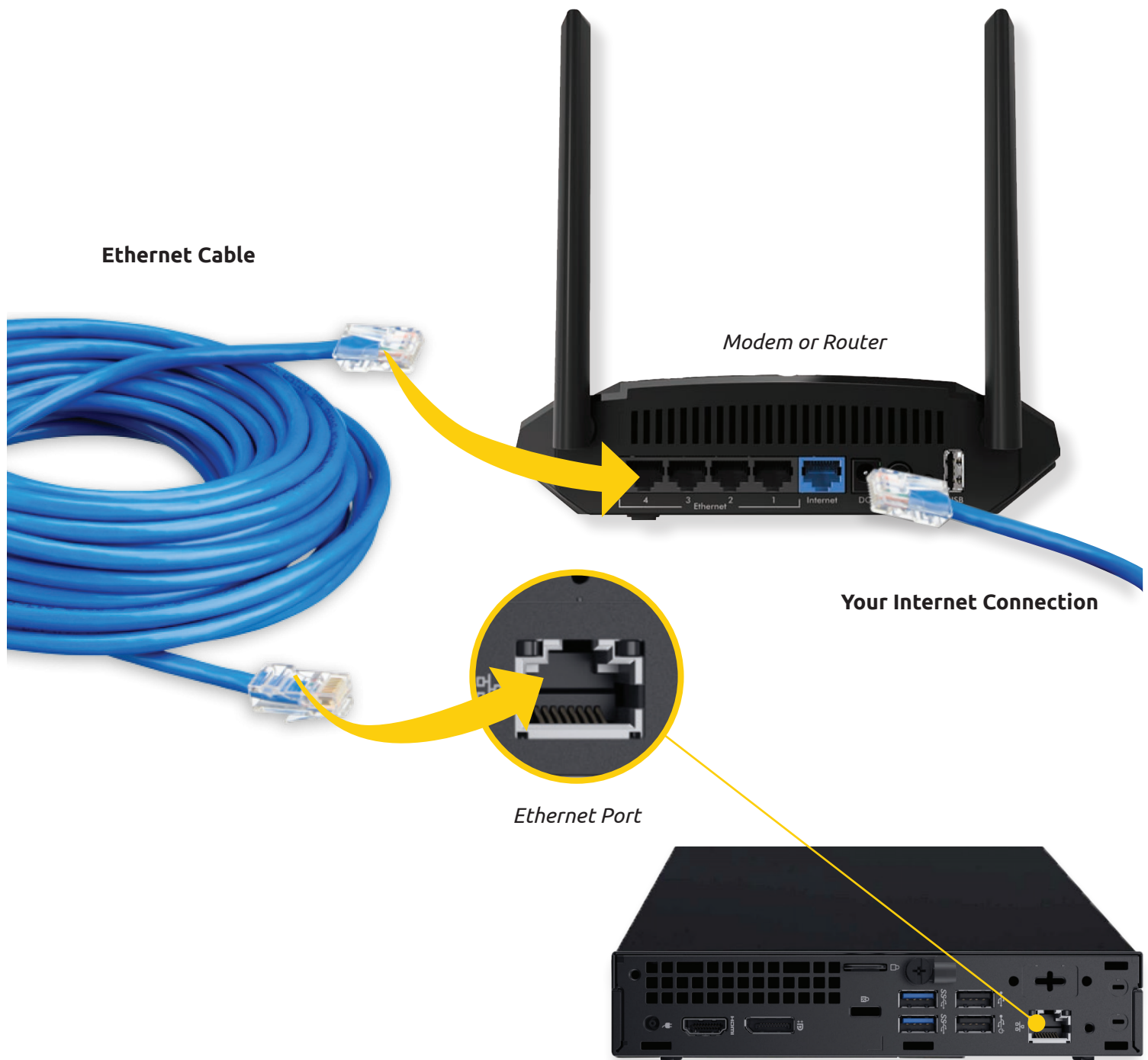
Plug into green jack on console

Plug in RCA Connections to Mixer or Amp

2 AUDIO CABLES ARE INCLUDED IN THE BOX:

- 1 x 6inch 1/8" to 2 RCA (female)
- 1 x 6ft 1/8" to 2 RCA (male)

5. Connect to a network or internet connection

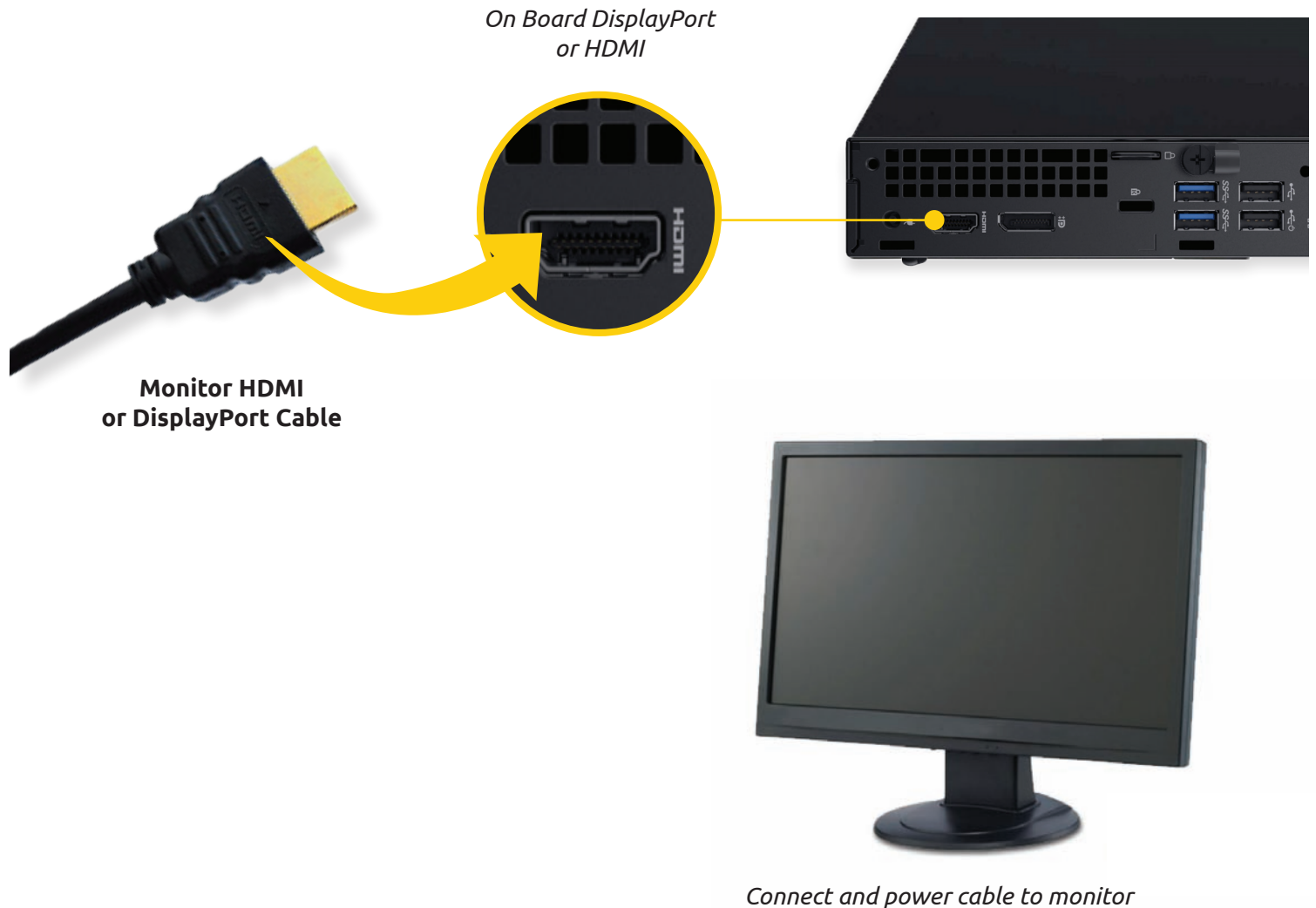


NOTES:

We don't recommend the use of WiFi as your network connection due to reliability. A USB Wifi adapter must be purchased separately to use WiFi.

6. Connect monitor (OPTIONAL)

The Player User Interface will appear on the monitor



7. Turn on your Music Console with a press of the button!

The Music will start in 1-2 minutes



Tutorials

Once you've finished setting up your Control Play Music Console, visit our online tutorials page to learn everything you need to know about the console, player, and more!

www.controlplay.com/tutorials